



Artifacts

SUMMER

Published by the Brunswick Historical Society

2016

ANTIQUe APPRAISAL DAY

Sponsored by
**THE BRUNSWICK HISTORICAL
SOCIETY**



Appraisals by:

**Romanation Jewelers &
New Scotland Antiques**

(Appraisals of jewelry, art work, antique
clothing, textiles,
small furniture, pottery)
\$5.00 per item

**JUNE 11, 2016
9:00 A.M. TO 3:00 P.M.**

**AT THE
BRUNSWICK COMMUNITY CENTER
KEYES LANE, CENTER BRUNSWICK
(OFF RT.7)**

Lite Lunch available
For additional information call
279-4024

NEW EXHIBIT COMING SOON

Story & Clark Organ Co.

In the days before television and radio, social entertainment within the home took many forms, often involving musical entertainment performed by members of the household. From the mid- 19th century, the parlor reed organ became the most popular form of musical instrument, with annual production in the United States reaching 900,000 by 1890!

Cheaper, lighter, and requiring less maintenance than pianos, the parlor reed organ was an affordable alternative for those with limited means, and they were so popular that they became the most important possession a middle class Victorian family could own. When former owners Delia and Daniel Dunham of NYC purchased their organ (highlighted in the new exhibit) and brought it to their Grafton summer home, they were participating in a new kind of bourgeois culture – but what exactly was it and how did it develop?

Join us on Saturday, May 14, 2016 at 10:00 am when the Brunswick Historical Society's new exhibition, *"Virtue's Grand Melody:" The Parlor Organ in Victorian Culture* opens at the Garfield School. Through an exploration of the society's 1890's parlor reed organ, this exhibit will highlight the musical, social and consumer culture that existed in Victorian America and how this instrument was the ultimate symbol of that culture.



Brunswick Historical Society

The Garfield School
605 Brunswick Rd.
(Corner of Moonlawn and Rt 2)
Troy, NY 12180

<http://www.bhs-ny.org>
(518) 279-4024

Wednesday 1pm - 3pm
Saturday 10am - 3pm

Board of Trustees

Tracy Broderick
President

Bill Prout
Vice President

Nancy Iannucci
Secretary

Claire Steiner
Treasurer

Willie Bradley

Dan Casale

John Delano

Diane McGuirk

Sherry Perpetua

Elissa Prout

Sylvia Rooney

Artifacts is published quarterly by the
Brunswick Historical Society

President's Message

I would like to welcome our two new members to the Board of Trustees. John Delano and Dan Casale.

Our interns will be with us a few more weeks. We have another intern who will be helping us out during the summer. In a future newsletter we will be publishing some of their work. It has been a pleasure to work with these young ladies.

Our building has received a much needed uplift, the exterior of the building has been painted. We also had two trees removed. I would like to extend my thanks to the Town of Brunswick, especially the Highway Department. In the next few weeks the Society will be installing a millstone fountain out in front of Garfield School by the flag pole. The mill stone was found during the replacement of the Eagle Mills Bridge. Sharon Zankel donated the millstone to the Society which we will use as the center piece for the project.

New Board Member Bios

John Delano and his family have been Brunswick residents for 30 years. He earned a PhD in geochemistry from Stony Brook University in 1977 is currently the Associate Dean for Research in the College of Arts and Sciences (with 21 academic departments and more than 400 faculty) at UAlbany. His NASA-sponsored research has led to more than 60 publications in the professional journals. He has been doing historical research in Brunswick for the last several years.

Dan Casale is a third generation Brunswick resident raising two children in the town with his wife Darlene. Dan previously served on the board of the Historical Society as a trustee and as a vice president. He has been a Town Councilman for the past 9 years, currently in his third term as a Town Councilman. Dan volunteers for numerous organizations and boards in the Capital District.

CALENDAR OF EVENTS FOR 2016

- May:** Join us on Saturday, May 14, 2016 at 10:00 am when the Brunswick Historical Society's new exhibition, *"Virtue's Grand Melody: The Parlor Organ in Victorian Culture"* opens at the Garfield School
- June:** Antique Appraisal Day at the Brunswick Community Center, Keyes Lane on Saturday, June 11 from 9:00 to 3:00.
- July & August:** Join us every Tuesday night at 6PM for the Summer Concerts at the Brunswick Community Center and buy some 50/50 tickets to benefit the BHS.
- September** Tag and Bake Sale will be held on Saturday, September 10 from 9:00 - 3:00 at the Society. Vendor spaces are available. Call 279-4024 to sign up.

Second Annual Eastfield Village Founder's Day Set for October 1, 2016

By Sharon Zankel, Brunswick Historian

On August 26, 2014 Rensselaer County lost a most remarkable citizen and dedicated, multi-talented preservationist with the passing of Don Carpentier, creator of Eastfield Village in the town of Nassau. Don had the unique ability to master as well as teach the skills required to do the kind of work performed by our forebears. Years ago Don spoke at BHS about Eastfield Village and offered his support and ideas as our organization developed the Historic Building Marker Program.

I met Don at a local yard sale in the 1970s as we searched through boxes of dusty old house parts. He judged every item I thought appropriate for my old house restoration to be “too recent” for his projects. He said he liked to study and work with buildings 150-200 years old and seemed to have no qualms about dismantling a building to haul it back to his place “out past Sand Lake” for restoration.

Several years later Don's work of reconstructing historic buildings was the subject of a newspaper article—he had not only dismantled, moved and rebuilt a number of historic structures but was well on his way to creating a small early American village on his family's farm! Over the next two decades Don reconstructed over 20 buildings dating from the late-eighteenth century to mid-nineteenth century including a Greek revival church, a 13-room c. 1793 tavern, a general store, and many smaller structures that had served tradesmen and businesses of pre-industrial America. If a building component was missing or unusable, Don crafted one exactly like the original using historic tools. Every structure was outfitted with period furnishings and artifacts. Eastfield Village was so named as it's situated in the east field of the Carpentier farm.

It wasn't long before Eastfield was featured in magazines such as *Early American Life* and *Country Living* and used as a movie set. Eastfield Village has earned the recognition of prestigious architectural historians and expert preservationists from around the country and abroad.

East field Village is not a museum and it is rarely open for public visitation. Don considered Eastfield a “preservation laboratory” and established the Early American Trades and Historic Preservation Workshops Program to promote the study of traditional trades and domestic arts. Ten or more workshops, typically of three to seven days duration, are offered during the summer months, and a variety of subjects—building techniques such as masonry and timber framing, blacksmithing, tinsmithing, clock repair, textile and ceramic identification, and early American cooking and baking are offered during summer months. Participants are permitted the opportunity to lodge at Eastfield during the course of study, and many do despite the absence of modern conveniences such as indoor plumbing and electricity.

The not-for-profit Historic Eastfield Foundation manages Eastfield Village, and plans to host an annual Founder's Day as a tribute to Don Carpentier and as a fundraiser. This year's Founder's Day is set for Saturday, October 1, and information about the day's activities and registration should soon be posted to Eastfield's web site—www.historiceastfield.org. I attended last year's event; it was my third visit to Eastfield Village and the first since Don's death. Don may not have remembered our meeting at a yard sale but he always inquired, “How's the Brunswick Historical Society doing?” In honor of Don and for the enjoyment of those who are not familiar with Eastfield Village, I offer the accompanying photographs taken last year at the First Eastfield Village Founder's Day.



Greek Revival Church at Eastfield Village.

Interior of blacksmith shop at Eastfield Village. This was the first structure restored by Don Carpentier.

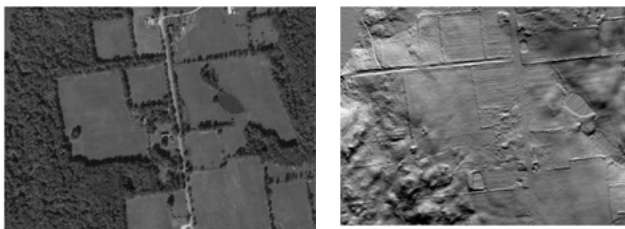


The Village Green at Eastfield. A restored c. 1793 tavern is seen left and to the right is a historic mile marker. Many Eastfield supporters and volunteer staff donned period costume for the First Annual Founder's Day in 2015.

LiDAR images available upon request (LiDAR = Light Detection And Ranging) Submitted by John DeLano

Most of northern Rensselaer County has been imaged by New York State and the Federal Emergency Management Administration (FEMA) using airborne LiDAR technology that provides ground-resolutions of 3 to 5 feet. LiDAR equipment is carried by an aircraft flying a systematic pattern over a designated area. The bank of lasers on-board the aircraft sends thousands of low-energy pulses per second toward the ground, and the time for each pulse to return to the aircraft (about 4/100,000th of one second) is accurately measured. The result is an information-rich image of the ground, even in areas that are heavily wooded (since many of the laser pulses are able to travel between the leaves to reach the ground and return to the aircraft). When the original LiDAR images are processed with the required software, they can reveal abandoned roads, foot trails, old stone walls, land contours, old foundations, and other subtle features. Each LiDAR image covers an area of 1 square mile.

As an example of the kind of results that are available, these two figures show an area (about half of a mile across) that Prof. Delano has been studying at Canterbury Shaker Village in Canterbury, New Hampshire. The first image from 'Google Earth' shows tree-lined fields with wooded areas on the left and right sides of the image. The second is LiDAR image of the same area showing the 18th century stone walls defining the edges of the fields that are conspicuous in the first image, as well as other features on the ground that are hidden from view in the first image by the wooded areas.



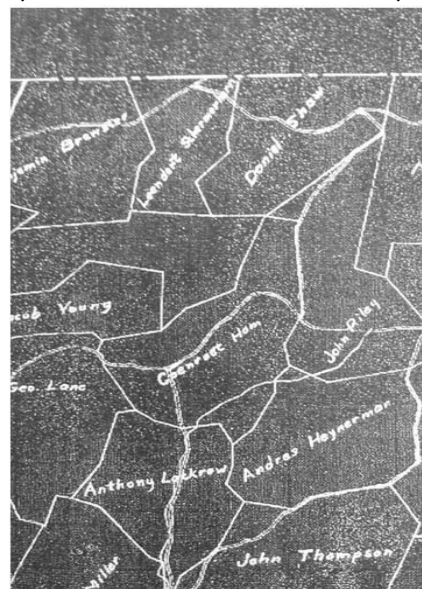
If you are interested in receiving similar information showing your area, especially if it is in a rural setting with extensive wooded areas, Prof. John Delano would provide you with images and additional information without cost. Please contact him by e-mail (jdelano@albany.edu) with the location of interest to you. The images and accompanying information would be sent to you either as a large (4 Mb) e-mail attachment or as a printed copy using U.S. mail. While this information is provided free-of-charge, donations to the *Brunswick Historical Society* are always welcome.

Rensselaerwyck land surveys (East Manor) Submitted by John Delano

Eleven (11) CDs containing images of the original land surveys from the 1790's of Brunswick (previously known as *Elizabethtown*) have been donated to the Brunswick Historical Society. Additional 1790's land surveys are also available for Grafton (previously known as *Roxborough*), eastern Poestenkill (portion of what was known as *Middletown*), Petersburg, Pittstown, Berlin, and Stephentown. The images of these exquisite, hand-written surveys (mostly by Evert Van Alen, John E. Van Alen, and Job Gilbert) were acquired by Prof. John Delano while doing research at the New York State Archives during the last several years.

To determine the owner of your land in the 1790's, please visit the Brunswick Historical Society to view the beautiful map showing all of the 1790 properties and owners in Brunswick (portion of that map is shown below). On that map, you can quickly find the area where your home is located. By determining the 1790's owner of that parcel of land, you will now be able to quickly locate and view the 1790's land survey of that parcel. The 1790's land surveys not only recorded the magnetic compass directions and lengths of every boundary (in chains and links: 1 chain = 66 feet; 100 links per chain), but also the surveyor's drawing of the property boundaries, a description of the soil conditions, and kinds of trees in the 1790's.

These CDs are available for use at the Brunswick Historical Society at 605 Brunswick Road (Corner of Moonlawn Road) in Brunswick at the following times: Wednesdays at 1:00-3:00 PM; and Saturdays at 10:00-3:00.



The Brunswick Historical Society Welcomes Geocaching

Submitted by Diane McGuirk

What is geocaching? It is a treasure hunt that began in May 2000 when satellite access was made available by the government for GPS receivers. A computer consultant in Oregon decided to test the accuracy of the GPS technology by hiding a container and documenting the coordinates. The finder would locate the container using a GPS and sign a log sheet to verify the find. This was the beginning of the phenomenon now known as geocaching- "Geo" for Earth and "cache" referring to a hiding place. Geocaching has grown so much that millions of hidden caches have been placed all over the world.

The Garfield School is home to a hidden geocache. It was placed in April 2015 and since then 23 geocachers have found the container, signed the log sheet, and entered their find into the geocaching.com website. The Garfield School cache requires a geocacher to read the historic plaque in front of the building and recalculate new coordinates to locate the cache. In this instance, the cache container is the size of a film canister and located..... well, that's a secret!

? Garfield School

N 42 43.822 W 73 35.849

Geocache Description

This cache is located in the Town of Brunswick, New York in Eagle Mills on NYS Route 2. Permission has been obtained from the Brunswick Historical Society to place a cache here. They are aware of why "those people" are looking around.

This historic building was erected to serve Brunswick School District #2 and is named in recognition of President James A. Garfield. This two room schoolhouse is considered the most well preserved nineteenth century building in Rensselaer County, was named to the National Register of Historic Places, and was recognized by the Preservation League of New York.

Today, the building is home to the Brunswick Historical Society, a non-profit, educational organization chartered by the New York State Board of Regents. During operating hours, please stop in to view the interior of this building.

The posted coordinates are for parking. You need to bring your own pen. The actual cache is located at:

N 42 43.(A) W 73 35.(B) To find (A) & (B) solve the following:

For (A), subtract 62 from the last three digits of the year the school was constructed.

For (B), add 32 to the last three digits of the year President James A. Garfield was born.

COMMITTEE REPORTS

BUILDING AND GROUNDS 2016

Claire Steiner, Chairperson

During this year the committee volunteers were: Tracy Broderick, Dan Casale, Ann Clemente, Phyllis Harrison, Bill Prout and Mary Ann Willetts

As usual the committee had a busy year. Seasonal yard cleanup work was done during the Spring and Fall. Flowers were planted for the Summer season. During February work was commenced on the expansion of the area that is used to house our collection. The existing room was doubled in size and allowed for additional storage space. Several jobs were taken care of by society volunteers such as, touch up painting, interior cleaning of the building and maintenance of the garden. During the Fall the Town of Brunswick had the exterior of the Garfield School painted and several clap boards repaired. Brick supports in the basement were also repaired. A large bee's nest was removed from the attic of the Garfield School.

MEMBERSHIP COMMITTEE 2016

Willie Bradley, Chairperson

We have had a wonderful response so far and I would like to thank all those members who have sent in their renewals and remind all those members who have not yet done so to PLEASE send in their membership renewals as soon as possible.

Morrison Cemetery Update

The Morrison Cemetery project was finally completed with the placement of the plaque on the newly painted fence. The cemetery is located on Route 2 in Cropseyville. Again, our thanks to the Irene B. Miller Foundation and Stewart's Shop for making this possible.



Brunswick Historical Society
PO Box #1776
Cropseyville, NY 12052



NON-PROFIT ORG.

U.S. POSTAGE

PAID

Albany, NY.

Permit No. 917

OR CURRENT RESIDENT

Please Support our Corporate Members

Brunswick Harley Davidson, Inc.
Brunswick Physical Therapy
Brunswick Veterinary Hospital
Capital Agway
Carbone Auto Group
Fagan Associates
Fowler, Doyle, Spain, Speiss and Florsch
Herrington Farms
Lori Schindler Realty
Rifenburg Construction, Inc.
Schmidt Agency, Inc.
Stewart's Shops
Tipperary at Tara Ltd.
Trzcinski Farms
Warren W. Fane, Inc.

Mission Statement

The Brunswick Historical Society shall bring together those persons interested in the discovery, collection and preservation of historical materials as they relate to the Town of Brunswick and Rensselaer County, N.Y. The Society shall encourage and promote the preservation of historical buildings, cemeteries, monuments and markers of local importance.

The Society is a non-profit 501(c) (3) educational organization, chartered by the New York State Board of Regents since 1981. In accord with the Society's Absolute Charter the Society continually meets the requirements of the Board of Regents, including research, collections management and providing programs and interpretive activities for the education benefit of the public.